



marantz®

Integrated Amplifier PM6006

Quick Start Guide

Kurzanleitung / Guide de démarrage rapide / Guida di Avvio Rapido /
Guía de inicio rápido / Snelhandleiding / Snabbstartsguide /
Краткое руководство пользователя / Skrócona instrukcja obsługi

Read Me First....

Bitte zuerst lesen... / Lisez-moi en premier.... / Nota preliminare.... /
Lea esto primero.... / Lees mij eerst... / Läs detta först... /
Прочитайте в первую очередь... / Przeczytaj to najpierw....

ENGLISH

DEUTSCH

FRANÇAIS

ITALIANO

ESPAÑOL

NEDERLANDS

SVENSKA

РУССКИЙ

POLSKI

Welcome

Thank you for choosing a Marantz amplifier.
This guide provides step-by-step instructions
for setting up your amplifier.

**Please do not return this unit to the store –
call for assistance.**







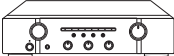
If you need help... :

If you need additional help in solving problems,
contact Marantz customer service in your area.
For details, see the Marantz homepage.


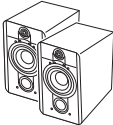
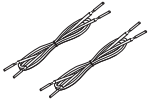
www.marantz.com

Before You Begin

What's In the Box

Quick Start Guide		Power cord	
Owner's Manual		Remote control unit	
Safety Instructions		R03/AAA batteries	
Amplifier			

Required for Basic connections

		
CD player	Speaker systems	Speaker cables



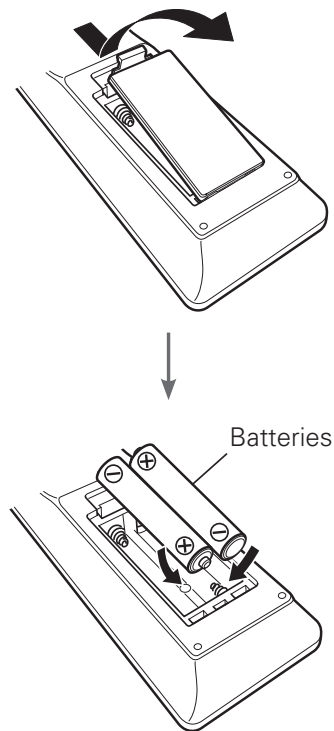
These drawings are for illustrative purposes only and may not
represent the actual product(s).

Setup

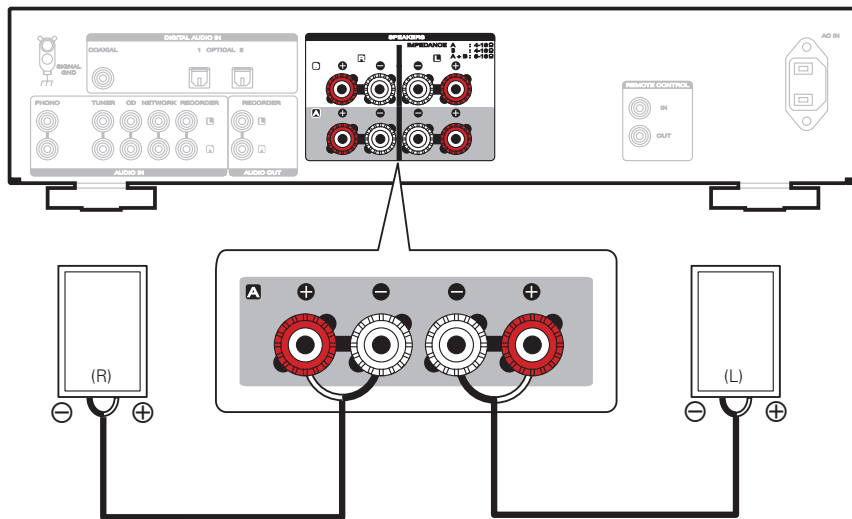
There are six steps to the setup process.

- 1** Install batteries in the remote control unit
- 2** Connect the speakers to the amplifier
- 3** Connect the CD player to the amplifier
- 4** Plug the power cord into a power outlet
- 5** Turn on the power of the amplifier and then set the speakers for audio output to **SPEAKERS A**
- 6** Begin playback

1 Install batteries in the remote control unit



2 Connect the speakers to the amplifier

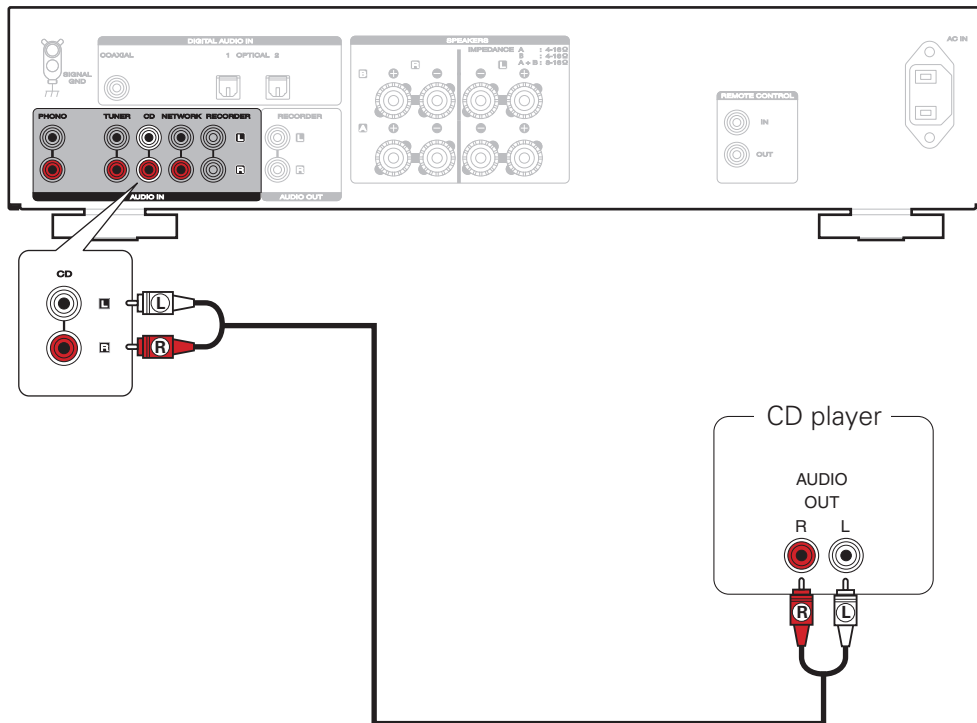


Connecting the speaker cables

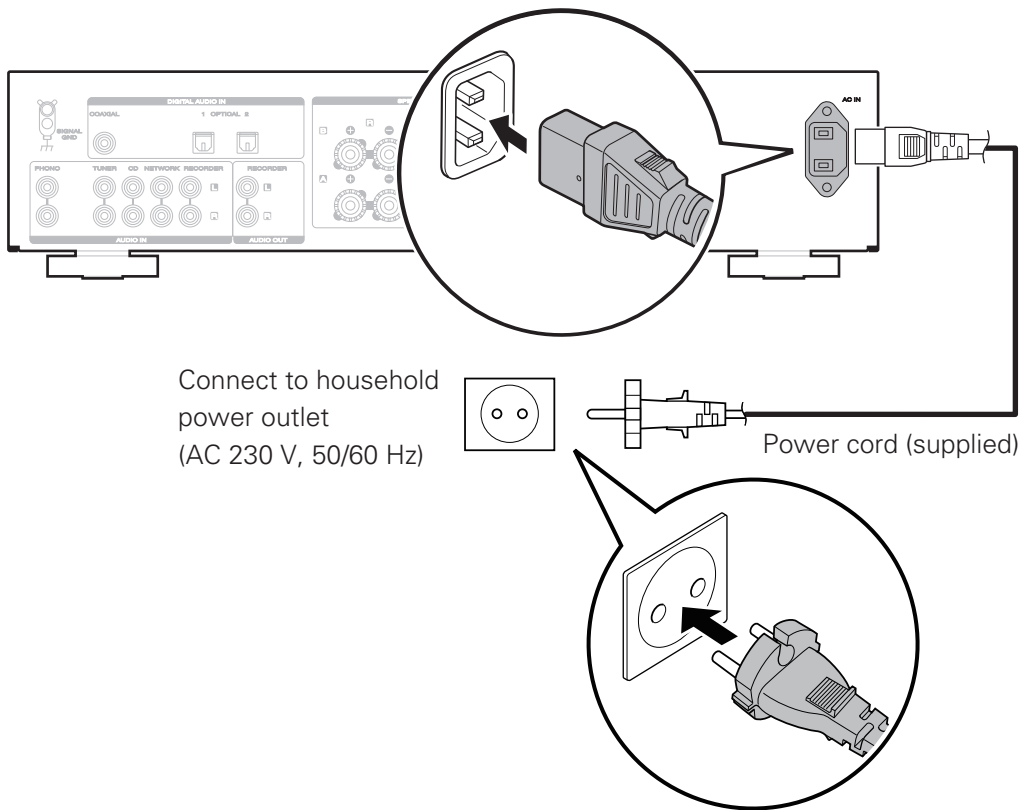
- ① Peel off about 10 mm of sheathing from the tip of the speaker cable, then either twist the core wire tightly or apply solder to it.
- ② Turn the speaker terminal counterclockwise to loosen it.
- ③ Insert the speaker cable's core wire to all the way into the speaker terminal.
- ④ Turn the speaker terminal clockwise to tighten it.



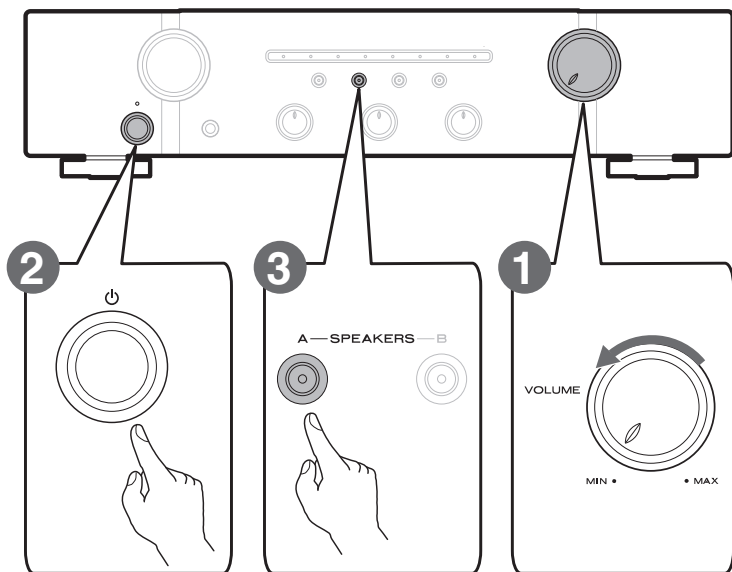
3 Connect the CD player to the amplifier



4 Plug the power cord into a power outlet



5 Turn on the power of the amplifier and then set the speakers for audio output to **SPEAKERS A**



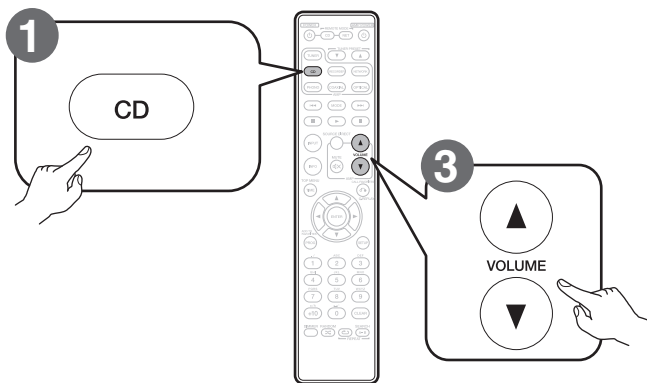
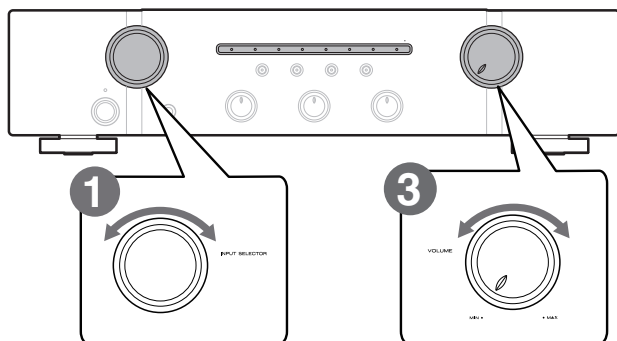
1 Reduce the volume to the minimum level.

2 Press the power operation button.

3 Press **SPEAKERS A**.

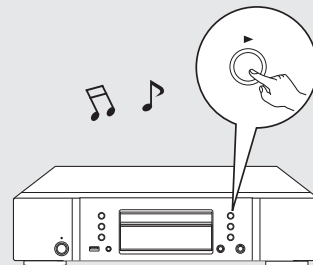
The **SPEAKERS A** indicator lights and the speakers for audio output are set to **SPEAKERS A**.

6 Begin playback



1 Set the input source to “CD”.

2 Play the CD player.



3 Adjust the volume.

Owner's Manual

Please reference to the Owner's Manual for more details about the setup and operation of the amplifier and its features.

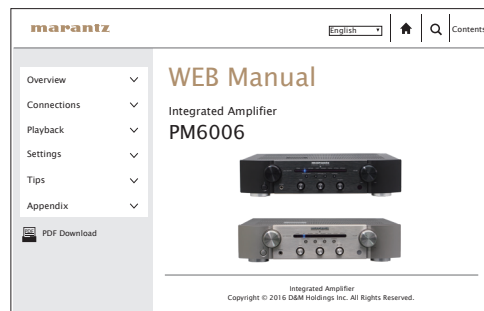
❑ Online Version

Enter the following URL into your web browser:

manuals.marantz.com/PM6006/EU/EN/



Online Manual

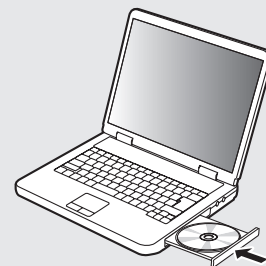


❑ Printable Version

Access the print version of the owner's manual from the included CD-ROM or select the "PDF Download" link from the Online Version.

1

Insert the disc into your PC.



2

Follow the screen or double click on the PDF file.

www.marantz.com

You can find your nearest authorized distributor or dealer on our website.

marantz® is a registered trademark.