



HEOS 1 Go Pack QUICK START GUIDE

BEFORE YOU BEGIN

Make sure you have the following items in working order:



HEOS 1 Speaker



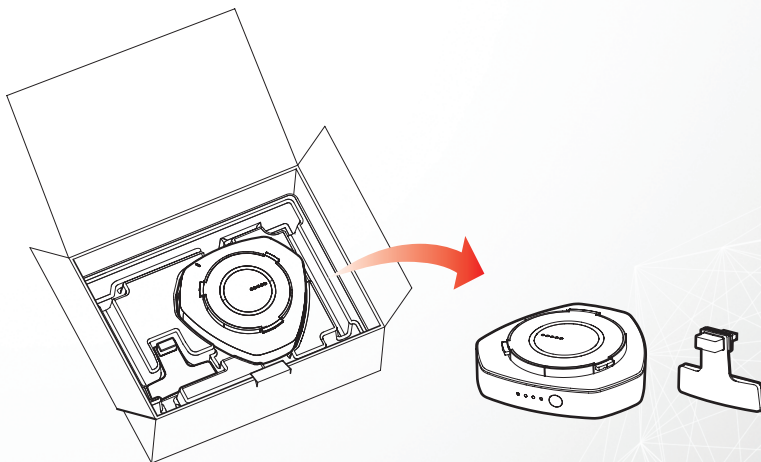
Apple iOS or Android mobile device
connected to your network

Before using a new HEOS 1 speaker with Bluetooth, we recommend you first connect your HEOS 1 Speaker to your home network to get the latest speaker updates and newest features.

A home network is not required for every day Bluetooth functionality.

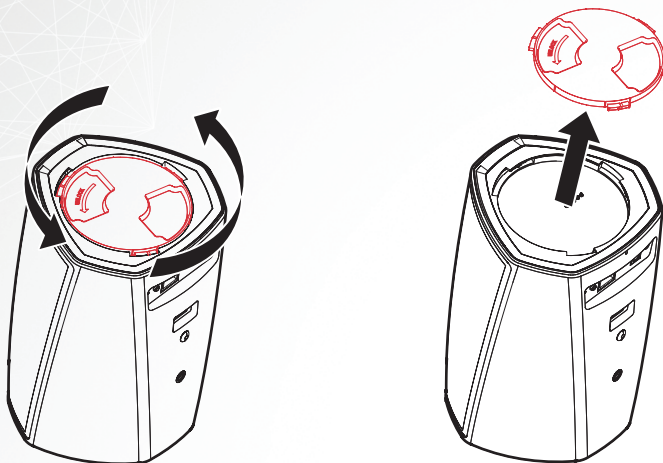
STEP 1: UNPACK

Carefully unpack your HEOS 1 Go Pack.
Verify that the following items are included in the box.



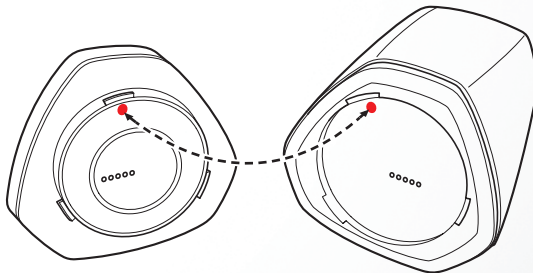
STEP 2: PREPARE

Remove the cap from the bottom of the HEOS 1 speaker by turning the cap counter-clockwise and pulling it away from the speaker.

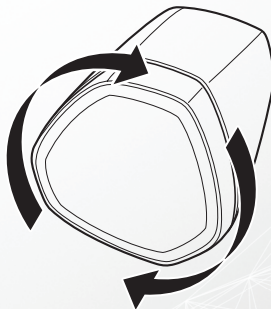


STEP 3: ATTACH

- 1 Align the red dots on the top of the battery and bottom of the speaker.

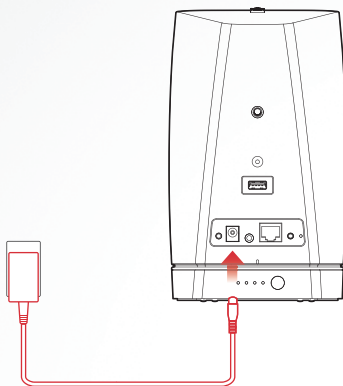


- 2 Turn the battery clockwise so that it is aligned with the shape of the speaker.



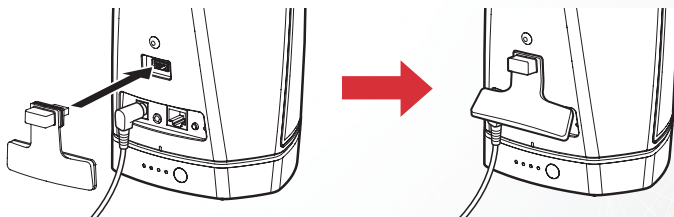
STEP 4: CHARGE

To charge the battery, connect the HEOS 1 power adapter between the speaker and a wall outlet. Four blue LEDs indicate a full charge.



STEP 5: GO WIRELESS

Once your battery is fully charged, attach the Bluetooth Adapter to the back of the speaker.



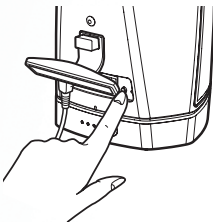
STEP 6: PAIRING

Pairing the HEOS 1 with your Devices

- 1 Activate the Bluetooth setting on your mobile device.



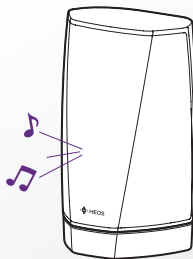
- 2 Press and hold the Connect button located on the back of the HEOS 1 speaker (under the right side of the cap) for 3 seconds and release the button when you see a pattern of two flashes on the status LED.



- 3 Select "HEOS 1" from the list of available Bluetooth devices. In a few seconds your mobile device will indicate that it is connected to your speaker.

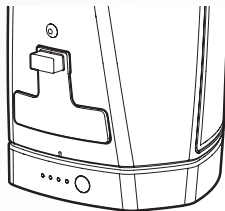


- 4 Play music using any app on your device. The sound will now play from the HEOS 1 speaker.



STEP 7: CLOSE SPLASHGUARD

- 1 Remove the power connector from the speaker.
- 2 Press in the Splashguard so that it is firmly and evenly attached.



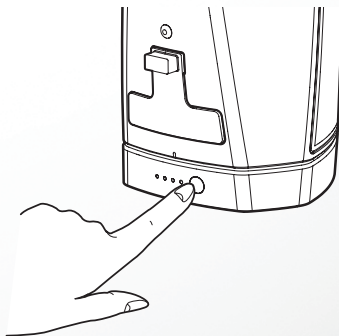
Properly attaching the splashguard will make your HEOS 1 speaker waterproof to the IPX4 standard. DO NOT submerge the speaker in water!

TURNING OFF THE BATTERY

To turn off the battery, press and hold the button on the back of the battery for 2 seconds. The LEDs will flash quickly then turn off, indicating that the battery is off.

Turning off the battery will conserve battery power while you are not playing music and HEOS 1 is not plugged in to AC power.

To turn the battery back on, press and hold the button again for 2 seconds.



Note: while the battery is disconnected from HEOS 1, it is always off.

OWNER'S MANUAL

- For more information, visit www.HEOSbyDenon.com
- Refer to the Online Manual for other functions information and operation procedure details.
manuals.denon.com/HEOS1/ALL/EN



BASIC TROUBLESHOOTING

Cannot pair a Bluetooth mobile device with the speaker

- The connection from the mobile Bluetooth device is malfunctioning. Power cycle the mobile device, remove the pairing information and re-pair the HEOS 1 speaker to the mobile device.
- Press and hold the connect button for 3 seconds and release the button when you see a pattern of two flashes on the status LED. Make sure your mobile device has Bluetooth turned on and select "HEOS 1" from the list of Bluetooth devices.

Cannot hear Bluetooth music

- Your Bluetooth mobile device is not paired with HEOS 1. Follow the pairing procedure.
- HEOS 1 is off. Connect HEOS 1 to AC power or turn on the HEOS 1 battery by pressing battery power button for 2 seconds. Check the AC power outlet is working.
- HEOS 1 battery is fully depleted. Check the battery gauge. Recharge the battery.
- The HEOS 1 is Bluetooth mode or Aux-in mode etc. Pair and connect Bluetooth device to HEOS 1.
- The Bluetooth mobile device is connected to another audio device. Make sure your Bluetooth device is connected to HEOS 1.
- The volume on Bluetooth mobile device is too low. Check the volume on the Bluetooth mobile device. Check the volume on the HEOS 1 speaker.

Cannot attach battery

- Make sure bottom cover not is installed on HEOS 1 speaker.
- Make sure no foreign object stuck in speaker/battery connection mechanism.
- Be sure to line up red dots before attempting clockwise rotation to lock.

Google Play is a trademark of Google Inc.

Apple, the Apple logo, iPad, iPhone, and iPod touch are trademarks of Apple Inc., registered in the U.S. and other countries. App Store is a service mark of Apple Inc. Wi-Fi Protected Setup™ logo is trademark of Wi-Fi Alliance.

The Bluetooth® word mark and logos are registered trademarks owned by Bluetooth SIG, Inc. and any use of such marks by D&M Holdings Inc. is under license. Other trademarks and trade names are those of their respective owners.

CONTACT Denon

If you need additional help in solving problems,
contact Denon customer service in your area
or visit HEOSbyDenon.com

For US & Canada only:

If you need further assistance with your HEOS Product,
please contact HEOS by Denon Customer Support Services below:

Website www.HEOSbyDenon.com/Support

Email Support@HEOSbyDenon.com

Live Chat www.HEOSbyDenon.com/LiveChat

Telephone Toll Free (855) 499 2820
(M-F 10:00AM to 10:00PM EST / Sat 12:00PM to 8:00PM EST)





DENON[®]

HEOSbyDenon.com

Printed in China 5411 11297 00AD
Copyright ©2015 D&M Holdings Inc. All Rights Reserved.