



## Total sound immersion

**With P7, everything is designed to allow you to lose yourself in music.**

Thanks to the technological improvements we've made for the P7 headphones, sound performance is a revelation. Bass is deep and tight, vocals are clearly defined and intelligible, and there's a wonderful sense of space, balance and clarity across the whole frequency range.

At the same time, the over-ear design and snugly fitting ear pads ensure P7 envelops you in sound. Because when you're hearing sound this good, you don't want anything to interrupt your enjoyment of it.




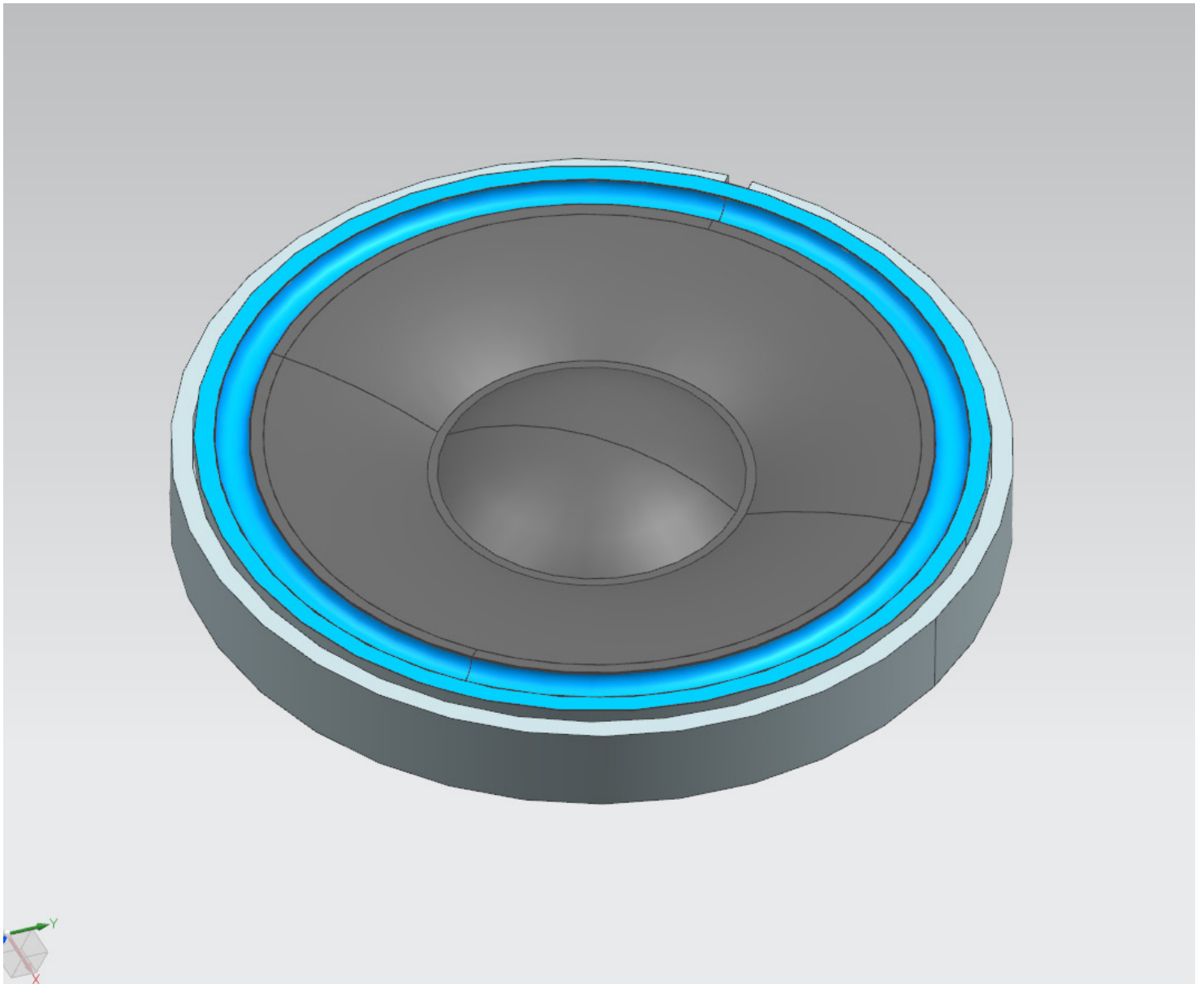
## Drive unit design

**Drive units with precise, controlled movement reproduce sound of the highest quality.**

With most headphones, sound quality is a direct result of the way the drive units are designed. Due to space limitations, the diaphragm performs the dual role of sound generator and suspension system.

With P7 our engineering expertise has allowed us to create a new kind of headphone driver, that works more like the drive unit in a hi-fi speaker, with a diaphragm focussed purely on the job it's supposed to do: generate sound. Which means a drive unit with a more precise, controlled movement – and a giant leap forward in sound quality.

 Surround



# Dual cavity ear pads

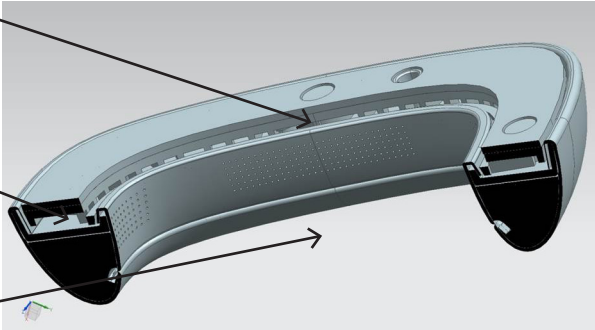
**Dual cavity ear pads ensure great sound for all ear shapes and sizes.**

P7's ear pads feature a dual cavity cushion design that helps the pads mould to the contours of the wearer's head. This design maintains a consistent volume of air between the drive unit and the surface of the ear at both sides of the head. Not only is stereo imaging enhanced, but the sound is optimised for every listener.

Communicated  
via slots

Secondary volume

Main volume

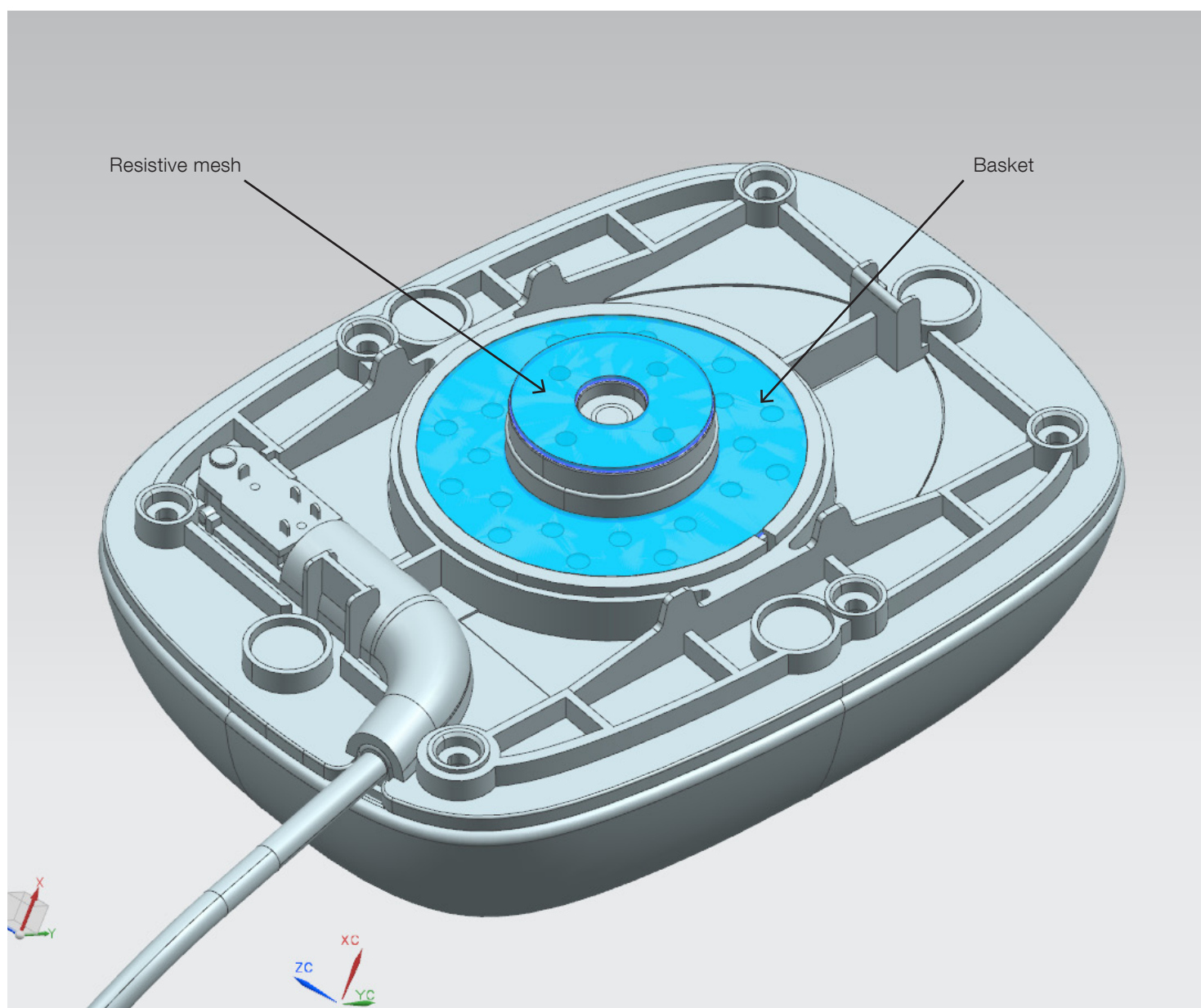




## Resistive speaker basket

**Resistive speaker baskets precisely control airflow so the headphones produce natural sound.**

The internal speaker baskets encasing the P7's drive units are perforated with air vents covered with a resistive film. This unique design allows for precise control of the airflow from back of the drive unit, resulting in a more uniform, piston-like movement.

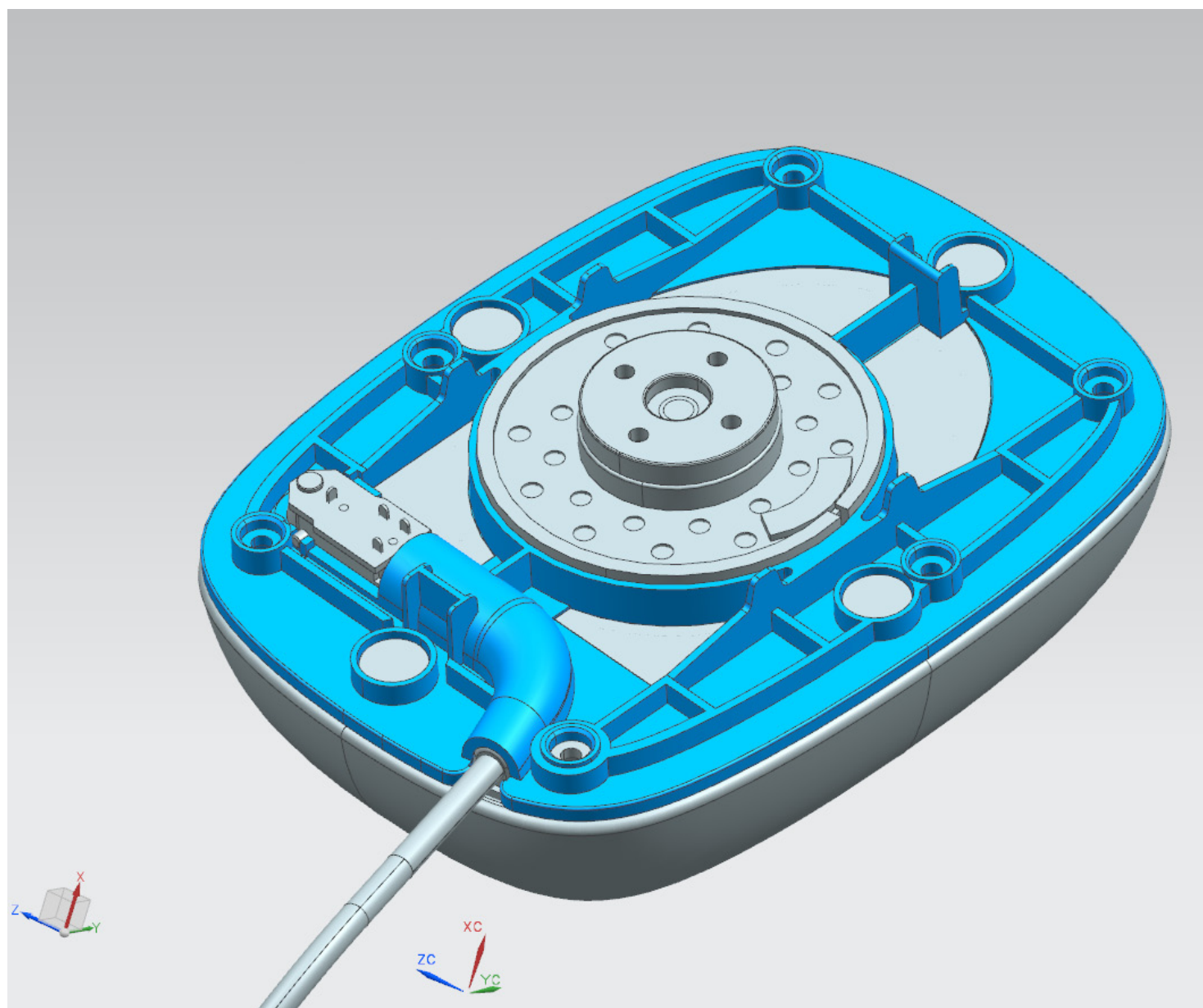


## Braced speaker baffle

**The braced speaker baffle eliminates unwanted vibrations so the headphones produce clean sound without distortion.**

P7's speaker baffle plates are constructed from a polymer material that has been heavily braced and tuned to make it very rigid and inert. This limits any resonances that might colour the sound of the headphones.

 Brace



## Light voice coil

**Light voice coil so the speakers can move freely and produce detailed treble.**

P7's voice coil is constructed from a copper-clad aluminium compound. This low-weight voice coil means that the drive unit can move freely, for extended high frequency dynamics.



# Damping material

Damping material eliminates unwanted internal reflections allowing the headphones to produce clean sound without distortion.

Damping material inside the speaker enclosure helps control and dampen unwanted internal reflections, reducing colouration and distortion. Bowers & Wilkins engineers have conducted exhaustive tests working with different combinations of damping materials, to ensure the best possible performance with P7.



Damping material in rear enclosure

